

NORTH ARROW

Mapping into the Millennium

North Carolina Property Mappers Association Newsletter

September 2001 Volume XXI

Special Edition

Editor: Richard J. Norejko, CMS

norejkr@co.buncombe.nc.us

Co-Editor: Sheila Harris

harriss@co.buncombe.nc.us

20 South Spruce St. Rm 205

Asheville, NC 28801

828-250-4970

President: William Oakes

boakes@co.new-hanover.nc.us

President Elect: Bobby McMahan

bobmcmahan@jacksonnc.org

Vice President: Trudi Ashby

tmashby@co.cabarrus.nc.us

Secretary: E. Marie Monteith

monteim@co.buncombe.nc.us

Treasurer: John "Gil" Robbins

landrecs@yahoo.com

Highlights:

Fall Conference
Vendors



From the Editor:

Part of the success that the **North Carolina Property Mappers Association** has enjoyed is attributed to its "business partners."

In recognition of these companies, this edition of the North Arrow is solely a "*Corporate Profile.*"

Vendor sponsorship and participation is vital for the Associations continued success. These profiles are companies who will be exhibiting at our Fall Conference October 3 – 5, 2001.

Please take note of their products and services and discuss your needs with them at your convenience.

Rick

From the Co-Editor:



Congratulations go out to Richard J. Norejko, CMS from Buncombe County. He was awarded IAAO's Member of the Year Award at the 2001 IAAO Conference in Miami on September 10th.





concord Engineering & Surveying, Inc.

Company Profile

Concord Engineering & Surveying, Inc.

Street Address:
45 Spring Street, SW
Concord, NC 28025

Mailing Address:
PO Box 268, 28026

Communication:
(704)786-5404 Phone
(704)786-7454 Fax
(800)627-1024

Web site:
www.concordengineering.com

President

Frank A. Rankin, III

Vice President

Marion Sandlin

*Serving the
Southeast since
1978.*

Qualifications

Concord Engineering & Surveying, Inc. is a firm specializing in civil engineering, GIS, GPS, and land surveying. Established in 1978, we have grown to be a firm highly experienced in providing professional site-civil engineering, surveying, and GIS services to major industrial, commercial, residential and governmental agencies.

Location

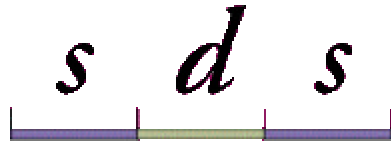
Located approximately twenty minutes from Charlotte, North Carolina, we can easily access the areas all across the Southeast. Our progressive recruiting efforts have allowed us to retain personnel professionally registered personnel in many states, including: **North Carolina, South Carolina, Georgia, Tennessee, Virginia, West Virginia, Texas, and Kentucky.**

Clients

Our flexibility and range of service have enabled Concord Engineering & Surveying, Inc. to provide site-civil engineering and surveying to clients as diverse as the Lowes Motor Speedway; Regional County School Systems; City of Charlotte, NC; City of Concord, NC; Greenville County, SC; Charlotte-Mecklenburg Utility Department; Blythe Development; Duke Power Company; South Carolina Department of Transportation; and the North Carolina Department of Transportation. Federal agencies on our client list include the United States Department of the Interior - Appalachian Trail; Tennessee Valley Authority; Cherry Point Marine Air Station; North Carolina Office of State Planning; North Carolina Geodetic Survey; and the U.S. Army Corps of Engineers in both the Wilmington and Savannah Districts. These are just a few of the many industrial, commercial, residential, and governmental agencies we serve.

Staff

Currently, Concord Engineering & Surveying, Inc. has 65 employees, including three (3) professional civil engineers, five (5) engineers-in-training (EI), one (1) landscape designer, one (1) construction inspector, and three (3) GIS professionals. The surveying staff is comprised of ten (10) professional land surveyors, thirteen (13) conventional/GPS survey crews, and six (6) CADD Computation technicians. In addition, our team consists of an office support staff, with experience in graphic design, project photography, safety, word processing, and accounting.



SMART DATA STRATEGIES

SDS, Inc., founded in 1989, has built a reputation for providing quality parcel mapping services in a timely and economical manner. SDS provides a comprehensive range of digital services including: Digital Parcel Mapping, Deed Research, Records Reproduction, Digitizing, Scanning, Topological File Processing, Database Design, Consulting, Training, System Integration, CAMA System Integration, and Rural Addressing for 911 emergency dispatching. SDS is located in Franklin, Tennessee, a suburb of Nashville. SDS is devoted to providing quality services to the GIS industry. These services include data conversion, software development, implementation services, web-hosting, administration, and business development.

Interested parties can contact SDS, Inc. through Billy Burle, SDS Accounts Executive at 615/ 794-5280 or brburle@sds-inc.com.



Corporate Overview

The demand for improved access to land information has increased dramatically in recent years. Land agencies around the world are recognizing the need for a land records management system capable of integrating computer systems, streamlining land records functions, and reducing administrative costs.

To meet this need, NovaLIS Technologies was formed in 1992. The mission of the newly formed company was straightforward: to create a commercial software product to manage and analyze information relating to land - an integrated land management system.

NovaLIS Technologies specializes in land records software and services. ESRI CANADA, ESRI INC., and Leica Geosystems jointly own NovaLIS. Its corporate headquarters are in Halifax, Nova Scotia, Canada with three regional sales offices strategically located across the United States. NovaLIS is comprised of an exceptional team of software developers, product specialists, and implementation consultants. Leveraging its international network of business partners, NovaLIS provides the best land information solutions on the market.

NovaLIS' customers are located throughout North America. They range from small municipal units to large cities, counties and provinces. NovaLIS is currently involved in implementing land records solutions in six Canadian provinces, the Yukon Territory, and close to 100 sites throughout the United States.

The NovaLIS Product Suite includes: *Assessment Office*, *Land Development Office* (formerly *Local Government Office*), *Parcel Editor*, *GATE*, and *Land Titles Office*. These products are designed to streamline land records management and improve access to information relating to property assessment, local government functions, cadastral mapping, and land tenure. *Assessment Office* combines CAMA, assessment administration systems, geographic systems (GIS), document imaging, and workflow management technology to fully automate property appraisal. *Land Development Office* is designed to automate, simplify, and track local government growth management practices such as licensing, permitting, and project tracking. *Parcel Editor* allows for the editing of cadastral information. *GATE* is a NovaLIS configured software product used to maintain SDE databases. NovaLIS *Land Titles Office* automates land registries, title office and land management agencies.

The NovaLIS product family is characterized by powerful workflow tools and built using ESRI's GIS Products and Relational Database Management System (RDBMS) software. The result is a spatially enabled, integrated, workflow oriented suite of solutions. NovaLIS markets its products to national, regional, and local governments worldwide.

Joe Rubisch , Regional Manager

Gary Waters, President

Cynthia Kempt, Manager of Marketing & Communications

NovaLIS Technologies Southeast Regional Office

4 Forest Knoll Drive
Weaverville, NC 28787
828-658-1986

p. 1-866-353-1800
e. info@novalistech.com
www.novalistech.com





PCW Mapping Company

1113 Secotan Place
Fuquay Varina, North Carolina 27526
Telephone (919) 557-0672 Fax (919) 557-0672



PCW MAPPING COMPANY
1113 SECOTAN PLACE
FUQUAY VARINA, NC. 27526

PCW Mapping Company has provided services throughout the United States for over 20 years and has a staff consisting with over 30 yrs experience in Tax Mapping. PCW Mapping Companys goal is to provide to our clients high quality results on schedule. PCW Mapping Co. can provide the following services :

1. COGO ENTRY DATA
2. QUALITY CONTROL
3. MAINTENANCE
4. TRAINING
5. APPRAISAL SERVICES
6. CONSULTING SERVICES FOR MAPPING AND APPRAISAL

Please call 919-210-4904 or 919-557-0672 if you are interested in any of our services or prices.
CONTACT PERSON: Pamela C. Ward

Thank You
Pamela C. Ward, President

Specializing In
• Mapping • Digitizing • Updating
TRAINING IN ALL AREAS OF CADASTRAL MAPPING

L. Robert Kimball & Associates, Inc. was founded in 1953 and has been headquartered in Ebensburg, Pennsylvania since that time. With 12 offices nationwide, Kimball serves the public, private, and governmental sectors both domestically and internationally. Employing over 450 professionals in fields as diverse as architecture, engineering, earth sciences, environmental engineering, surveying, aerial photography, mapping, geographic information systems, E9-1-1, and telecommunications, Kimball is a full service organization with complete in-house capabilities providing our clients with a single point of contact and a single point of responsibility. To guarantee prompt and convenient service to our clients, Kimball maintains four corporate aircraft, two of which are used exclusively for business travel.

Kimball's personnel are experienced professionals who are able to provide solutions to difficult engineering, architectural, environmental, or mapping challenges utilizing state-of-the-art technology. What is unique about Kimball is that most department and division managers have been with the firm in excess of 15 years.

Kimball's professional staff maintains a working knowledge of standards of performance applicable to individual fields of expertise, through in-house and external training and continuing education programs. Additionally, our professionals maintain memberships in numerous technical associations.

The Mapping Sciences Division of L. Robert Kimball & Associates, Inc. is a full service operation with in-house capabilities including surveying, aerial photography, analytical aerotriangulation, photogrammetry, planimetric and topographic mapping, digital orthophoto production, cadastral mapping, E9-1-1 addressing, environmental mapping and GIS. Our self-contained mapping operation is supported by an array of technical personnel including certified photogrammetrists, application programmers and other specialists. Throughout our nearly 50 years in business, we have evolved to meet the ever-changing needs of our clients, from traditional land surveys to the most advanced digital mapping, remote sensing and GIS applications. With over 100 mapping experts located at our headquarters at 615 West Highland Avenue, Ebensburg, Pennsylvania, we have the capacity, expertise and equipment to undertake projects of varying sizes and levels of technical complexity.

For more information about our mapping capabilities, please feel free to contact the following staff members:

Chris T. Holmes, Vice President

Business Development Manager
615 W. Highland Avenue
Ebensburg, PA 15931
Phone: 814-472-7700
Fax: 814-472-7712
e-mail: holmec@lrkimball.com

Gerald A. Kabala, Vice President

Business Development
2543 Ravenhill Road, Suite C
Fayetteville, NC 28303
Phone: 919-866-0462
Fax: 910-433-0448
e-mail: jkabala@aol.com

Nancy J. Sullivan, Vice President

Business Development
2543 Ravenhill Road, Suite C
Fayetteville, NC 28303
Phone: 910-433-2500
Fax: 910-433-0448
e-mail: sullin@lrkimball.com

The Kucera corporate mission is to provide comprehensive, professional geographic data acquisition, processing, and application services with primary expertise in aerial photography, remote sensing, surveying, photogrammetry, digital imaging, cadastral mapping, and geographic information systems.

Kucera International Inc. is a leading provider of aerial photography, remote sensing, photogrammetric mapping, GIS, and related products and services to government, industry, institutions, and the professions in North Carolina and throughout the United States and abroad.

To date, Kucera has completed aerial surveying, mapping, and other geomatic work covering over 30 counties and cities and hundreds of other sites in North Carolina. The work is performed at Kucera's headquarters office in Willoughby, Ohio, and satellite offices in Atlanta, Georgia, Lakeland, Florida, Pittsburgh, Pennsylvania, and Columbus, Ohio. These offices are staffed by a team of over 100 photogrammetric professionals with an average experience level of over 15 years.

Kucera operates a fleet of five high-performance aircraft and has full aerial photography, airborne GPS/IMU, LIDAR, and thermal mapping capability. Kucera's in-house digital base mapping specialties include orthophotography, terrain modeling, planimetric/topographic mapping, and cadastral mapping. Kucera also has complete GIS support capability, including GIS data acquisition/conversion, conflation/integration, database design/management, data loading/demonstration, needs assessment,

JOHN ANTALOVICH, JR., PE, NC PS,
PRESIDENT

JOHN ANTALOVICH, SR., NC PS, CEO

**CHARLES HOLLADAY, PE, NC PS, VICE
PRESIDENT**

**Jennifer M. Cook,
Marketing Director**

program implementation, application development, and training.

Other Kucera specialties include: ground-based GPS control surveying, facility management/engineering, and volumetric surveys.

With its extensive resources and capabilities, Kucera offers "sky-to-screen" turnkey mapping services and a tailored approach designed to yield high-quality results in a very cost- and time-efficient manner. Kucera practices total quality management and is currently achieving ISO 9000 certification of its quality control program. Time and cost control is achieved through rigorous project management, critical path scheduling, thorough client coordination/communication, and a fully automated cost accounting system.

Throughout its history, Kucera has been a model of stability and steady growth, remaining the same independently owned, private corporation dedicated to aerial mapping and related work for the last 50 years. Kucera's average annual technology investment is currently over \$500,000. Our sales growth averages 10 to 20 percent annually and has never exceeded our capacity.

Kucera is a certified North Carolina surveying firm with five licensed North Carolina surveyors/mappers on staff. Kucera is also an ESRI (ArcInfo) Certified Business Consultant and a corporate member of URISA, GITA, ASPRS, and MAPPS.



YOUR WINDOW TO THE WORLD

Corporate Headquarters

38133 Western Parkway

Willoughby, Ohio 44094
(440) 975-4230

map@kucera-gis.com

Kucera South

2215 South Florida Ave.
Lakeland, FL 33803-7226

Kucera West

11049 W. 44th Ave., # 215
Wheat Ridge, CO 80033-2254

Henderson Aerial Surveys

3889 Grove City Road
Grove City, OH 43123-9193

Keddal Aerial Mapping

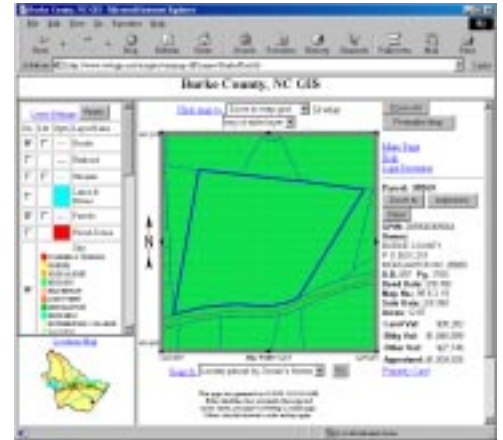
1121 Boyce Road
Suite 3100

Pittsburgh, PA 15241-3918

Kucera Southeast

1150 Lake Hearn Drive NE
Suite 200
Atlanta, GA 30342-1506

www.kucera-gis.com



Anderson & Associates, Inc.

Professional Design Services

Contact:
Timothy R. Ingold, PLS
Vice President
ingold@andassoc.com

7349 West Friendly Ave.
Suite F
Greensboro, NC 27410
voice: 336-299-7184
fax: 336-299-7415
www.andassoc.com

Anderson & Associates, Inc. is a progressive, employee-owned company based in Blacksburg, Virginia. Founded in 1968, we provide a full range of engineering, technology and design services. From site development and environmental engineering to GIS and website development, A&A exceeds expectations through the experience, expertise and efficiency of its more than 200 employees in six offices in Virginia, North Carolina and Tennessee.

Anderson & Associates, Inc. (A&A) specializes in planning, design, and construction administration of public and private projects. We provide services such as master planning, water, wastewater, and stormwater system design, transportation engineering, geographic information systems design and web development, and site design for institutional, municipal, state, commercial, industrial, residential, and recreational projects. From utilizing the Global Positioning System to expedite surveys, to capitalizing on the internet, A&A incorporates the latest technological advances in providing these services.

Since 1985 A&A has worked in the design and implementation of Geographic Information Systems (GIS). Our dedicated team of geographers united with our engineering and surveying experience offers a wealth of resources and applied knowledge in the GIS field.

One of our GIS projects has been the development of our web based

WebGIS.net™. With this innovative system, web browsers can now easily access land and parcel information online. WebGIS.net allows users to access parcel maps using 'search' and 'zoom' tools to locate specific addresses, property owners, property boundaries, and even property values. Users can also find the location of many geographic features, such as roads, streams, trails, and buildings. A&A's North Carolina WebGIS.net clients include Ashe County, Alleghany County, Avery County, Burke County, Town of Cary, Cleveland County and Stanly County, all hosted at www.webgis.net.